



# Burnaby Lake Flyers

## Membership Application Form

Burnaby Lake Flyers Association

Mail this application form, signed on both sides, to the current club address found on "Contact us" web page at [www.hoods-up.net](http://www.hoods-up.net)

Member Name: \_\_\_\_\_ Wings/Blade Level: \_\_\_\_\_ Membership Year Applied For: \_\_\_\_\_

Address: \_\_\_\_\_ City: \_\_\_\_\_ Prov: \_\_\_\_\_ Postal Code: \_\_\_\_\_

Cell Phone: \_\_\_\_\_ E-Mail: \_\_\_\_\_ Date of Birth, if under 18: \_\_\_\_\_

Radio Channel: \_\_\_\_\_ MAAC No: \_\_\_\_\_ Transport Canada Pilot Certificate No: \_\_\_\_\_

Please submit a copy of your MAAC membership, valid for the membership year you are applying for and if you haven't done so yet, please submit a copy of your Transport Canada Small RPAS Pilot's Certificate with this application.

I want to be added to the GroupMe BLF UNICOM and Coffee Shop chat groups: Yes No (circle one)  
(the GroupMe chat groups are private chats for use by club members to communicate with each other)

*For Office Use Only*

Annual Membership: \$70.00 / Under 18: \$20.00	Cash	Cheque	E-Transfer
Associate Membership: \$25 – no flying privileges			
Instruction Fee: \$25.00, refundable when Wings Level "A" or Blades "1" achieved			
Amount Received: \$	MAAC Verified:	Registered by:	

### Waiver Form

I, the undersigned, hereby agree to follow the Safety Code as established by the Model Aeronautics Association of Canada for the safe operation of radio-controlled model aircraft. I also agree to learn and abide by the site specific rules and agreements as arranged by the Burnaby Lake Flyers Association and the City of Burnaby regarding the use and scheduling of the Burnaby Lake East Sportsplex fields 3, 4, 5 & 6 for the purposes of flying radio-controlled model aircraft.

(Site-specific rules on back of form)

I hereby acknowledge that at my own risk, I use the property and facilities arranged for me by the Burnaby Lake Flyers Association, and I hold blameless the Burnaby Lake Flyers Association, it's Officers, Directors or Executive, and the owners of the property and facilities from any suit, cause, action or claim arising from my use of such properties and/or facilities for the purpose of model aircraft operation.

Additionally, I hereby agree to hold the Burnaby Lake Flyers Association, it's Officers, Directors or Executive blameless in the event of accidents, involving damage and/or loss of models, property or personal injury or loss of life resulting from the operation of my model aircraft, regardless of whether said aircraft was under my control or that of another person at the time of the accident.

The Burnaby Lake Flyers Association acknowledges that this waiver does in no way affect the applicant's rights or benefits under any insurance coverage by the Model Aeronautics Association of Canada or by the applicant's personal insurance.

Signature: \_\_\_\_\_

If under 18, signature of Parent or Guardian

Date of Application: \_\_\_\_\_

**NOTE: ALSO SIGN THE SECOND PAGE**

## **Burnaby Lake Site-Specific Field Rules Agreement:**

I agree to follow the MAAC Safety Code pertaining to the safe operation of model, radio-controlled aircraft at all times. I also agree to follow the below site-specific agreements in place between the City of Burnaby and the Burnaby Lake Flyers Association. These agreements are in place due to the shared nature of the fields we use to operate our radio-controlled model aircraft; and are to ensure that the public, who also use these fields, are not endangered by our aircraft, either while in use or on display.

1. I will have a valid MAAC insurance card and proof thereof.
2. I will place warning signs at designated locations (shown next page) prior to flying my aircraft at Burnaby Lake flying field. Members found disregarding this rule will get an automatic 1 month suspension of flying privileges.
3. All pilots of fixed wing aircraft and helicopters must do a range test before the first flight of the day with each aircraft if their transmitter is capable of performing range tests.
4. I will keep and use my own frequency pin/marker for the frequency board if using 72 MHz frequencies.
5. Fixed wing pilots must have passed Wings Level "A" or higher to fly solo at the field. If Wings Level "A" has not been obtained or if it has been revoked, a qualified instructor with minimum Wings Level "B" must accompany said pilot. Helicopter and multi-rotor pilots must have BLF Blades "Heli1" or higher to fly solo at the field, and must abide by the BLF Blades Helicopter Program document. A Heli pilot who has not attained Blades "Heli 1" must be accompanied by a qualified instructor with minimum Blades "Heli 2".
6. No gas/glow-powered planes are permitted at any time.
7. I will not fly within 30 meters of the parking lot and pit area, also will not fly within 30 meters of the playground and clubhouse at the south end of the field
8. I will not fly my aircraft while other user groups are participating in allotted, scheduled games on fields 3, 4, 5 or 6.
9. I will keep my aircraft in a safe place (away from spectators) while working on it or while it is on the ground in the pits.
10. Any visitor in pit area must be accompanied by a club member at all times. Children and pets must be kept under control in pit area at all times.
11. Flights must be limited to 15 minutes when others are waiting to fly.
12. An aircraft that utilizes a 5-cell lipo battery or larger must be armed and disarmed at a pilot station, not in the pit area.
13. Pilots will receive only one warning for safety violations after which on the second violation (for the same offense) they will be prohibited from flying for a period of 24 allotment hours. These Offenses will be logged by the safety officer. A second suspension in the same 30 day period may result in longer suspensions after being reviewed by the safety committee.
14. For FPV, pilots must respect MAAC and Transport Canada rules. Have a spotter capable of operating that model and that transmitter's configuration. FPV model must remain close enough for spotter to see the unobstructed model's orientation.
15. Multi-rotor flying is prohibited. Special permission to be granted by 2 Executive Members for all future members to fly multi-rotors for special purposes only. Members as of November 2, 2016 are grandfathered to fly multi-rotors without special permission.
16. No smoking in the pit area between the fence and the pilot station line.
17. Guests who are accomplished pilots, and are MAAC members, are allowed to fly not more than 3 days before they must pay to join our club. They must be accompanied during all flights by a club member, who should pre-familiarize the guest with club rules and boundaries. A guest's ability to fly should be pre-assessed with a brief interview by a club member. Guests who are not accomplished pilots should be buddy-boxed. During special events, a guest need not have a member standing beside them when flying.

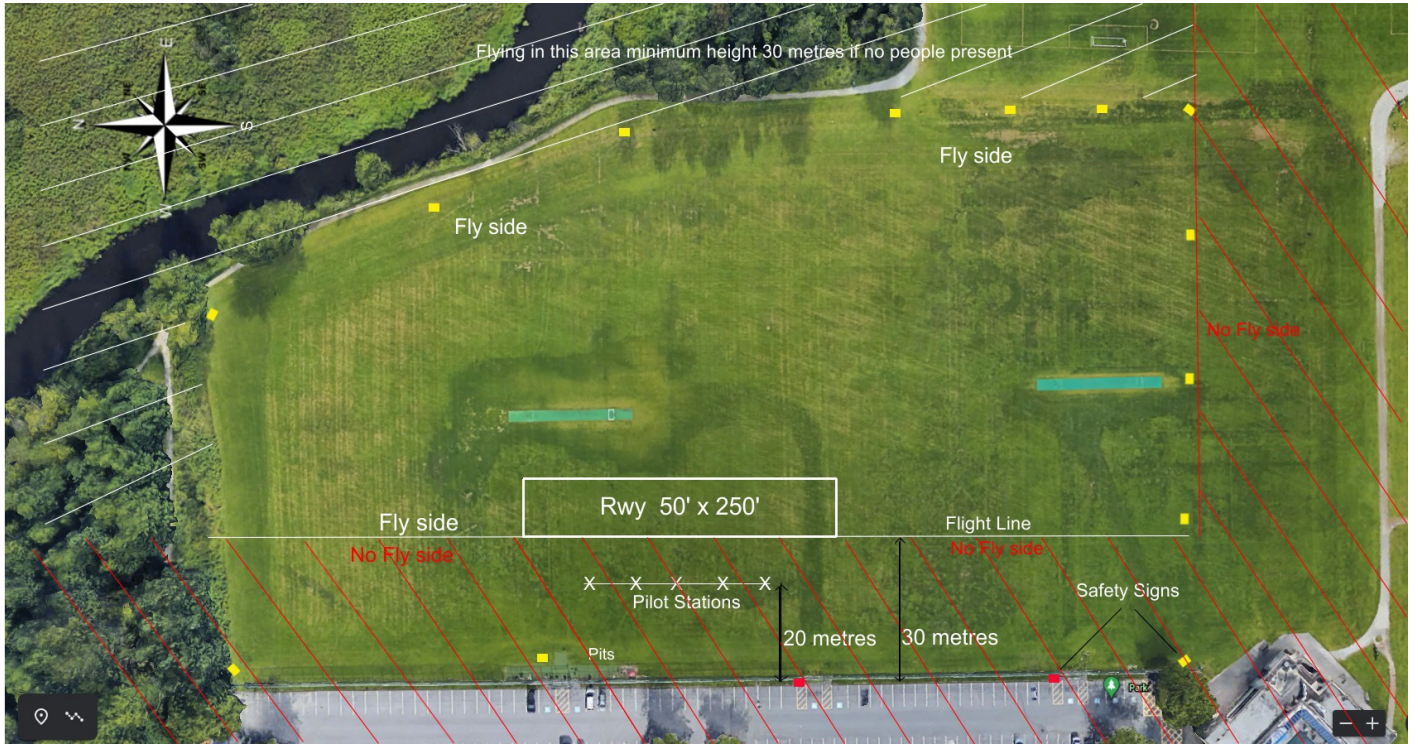
**I have read the above and understand all of the rules in effect. Members caught disregarding these rules are liable for disciplinary action to be taken by the club at the discretion of the club's Executive members.**

**Signature:** \_\_\_\_\_

**If under 18, signature of Parent or Guardian**

**Date of Application:** \_\_\_\_\_

## Field Map



Sign placement is not arbitrary. Please learn where they must be placed. If you are not sure, ask someone. If you are alone, signs go up before bringing your equipment from your vehicle and come down after putting all your equipment in your vehicle. You don't want to have a plane and transmitter sitting on the ground unattended while you are in the far corner of the field putting up or taking down signs.

The sign closest to the clubhouse is at the end of the fence. The signs on the south side are lined up 90° from the end of the fence.

The flight line is the nearest side of the runway and extends the entire length of the fields. There is absolutely no flying on the west side of that line.

# Keep This Map For Your Own Reference